

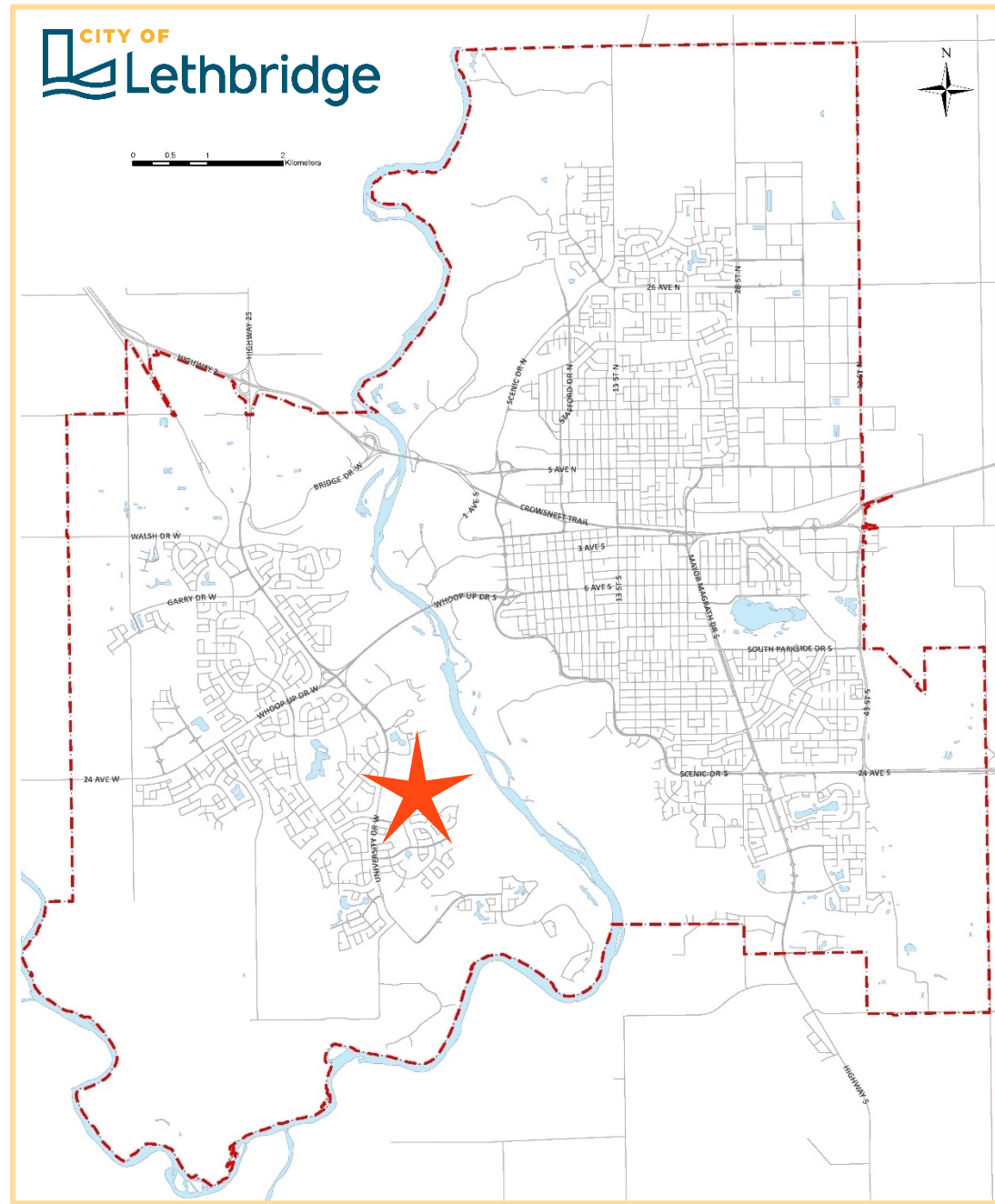
University of Lethbridge South Campus Outline Plan

Assets and Infrastructure SPC

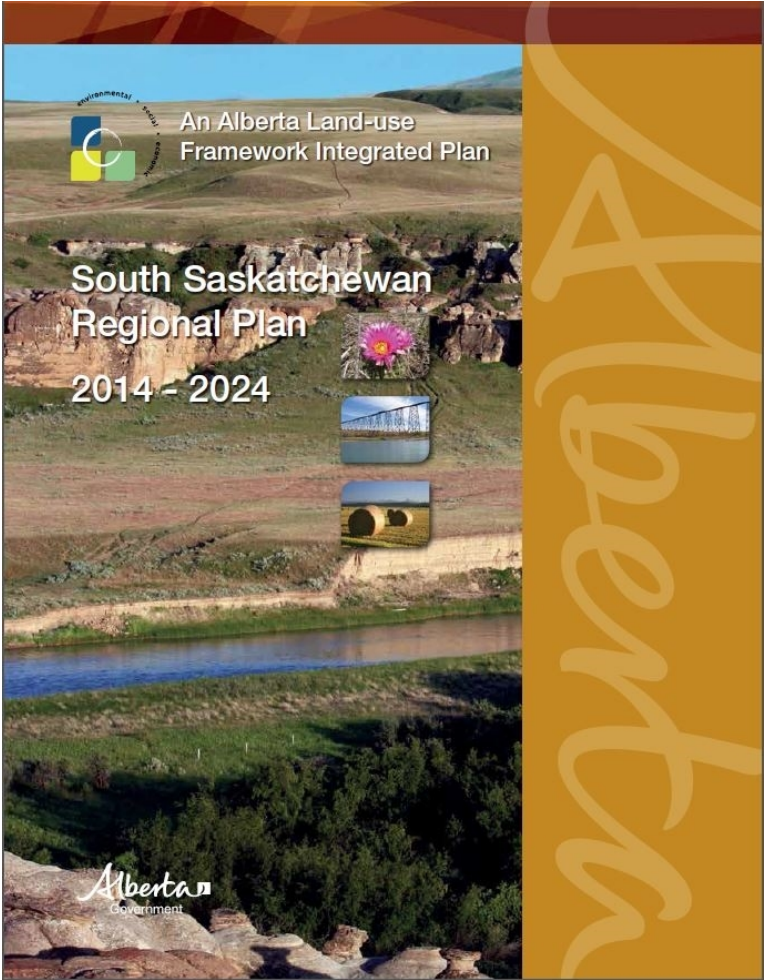
September 4, 2025

University South Campus Outline Plan *General Location*

Amendment Area 
City Boundary 
Streets 
Hydrology 

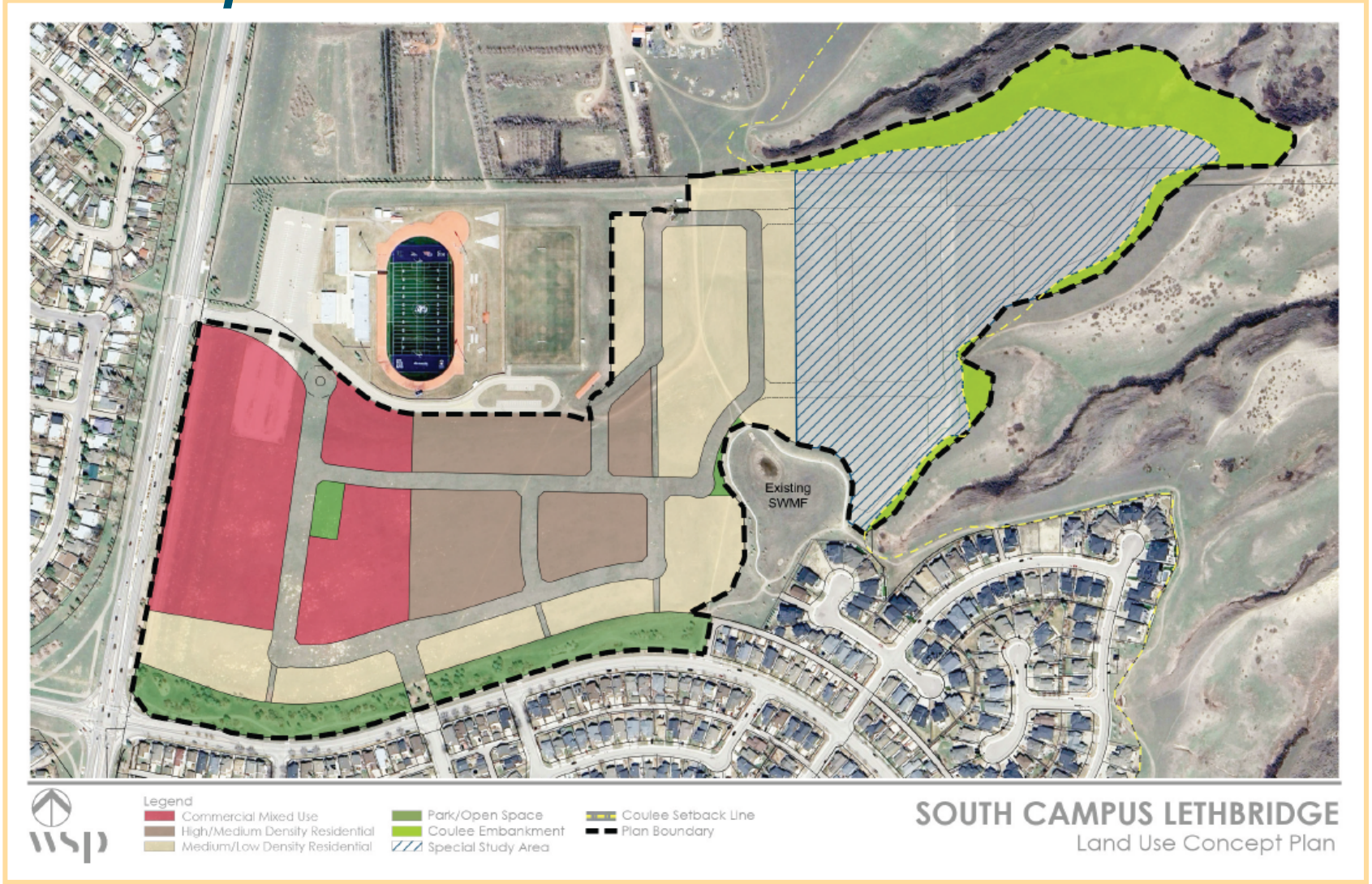


University South Campus Outline Plan



University South Campus Outline Plan

Land Use Concept



University South Campus Outline Plan

Evaluation & Analysis

- Conforms with all applicable statutory plans.
- Reviewed by City staff and the Land Use Concept meets all infrastructure standards.
- Provides a mix of residential and commercial spaces.
- Allows for a variety of housing options.
- City Council will continue to make decisions on future land use designations (rezonings).

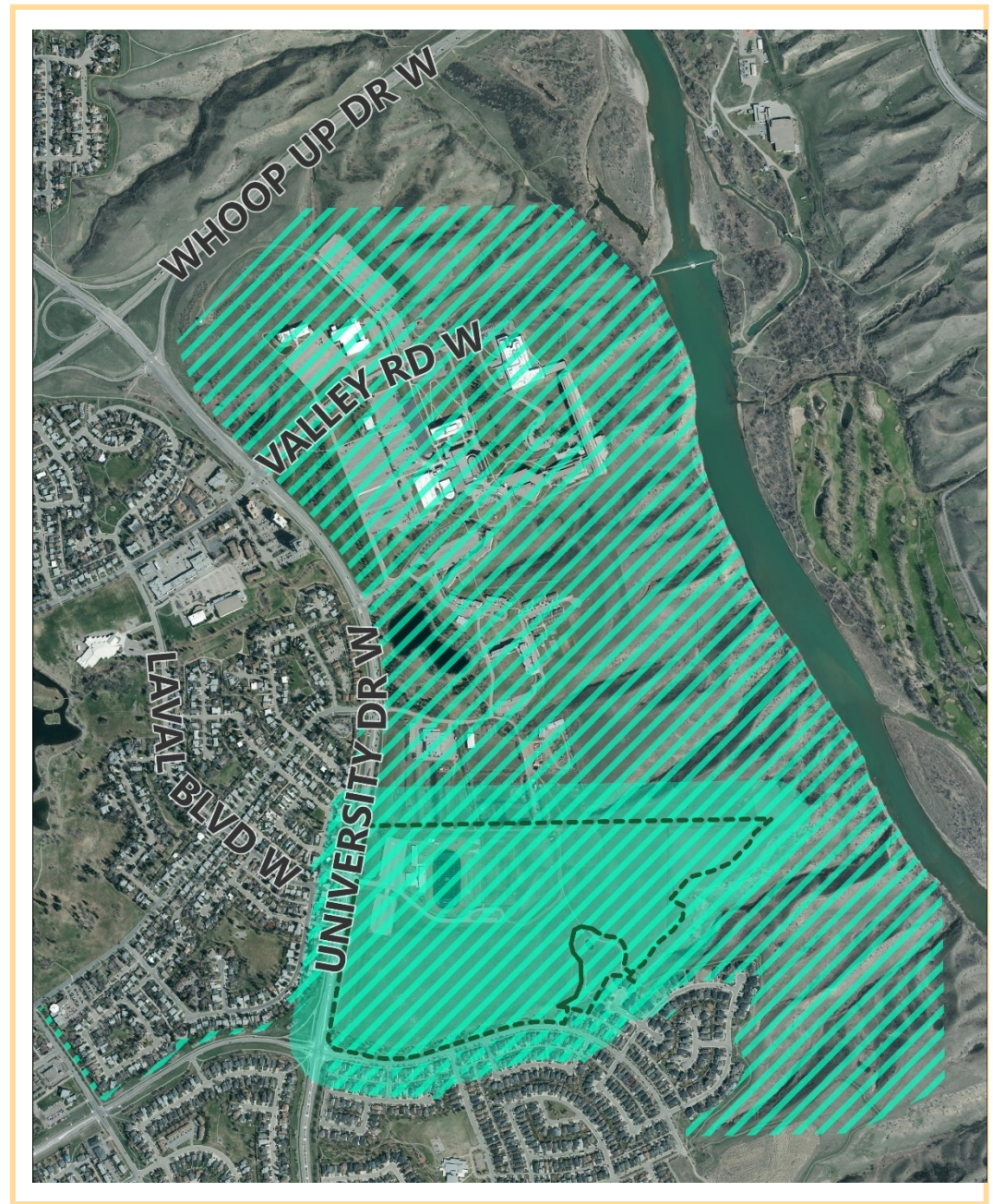
University South Campus Outline Plan

Notification information

Notifications Sent	172
Newspaper Advertisements	August 16 and 23

Amendment Area 

Parcels within
100 m Buffer 



University South Campus Outline Plan

Conclusion

- The Land Use Concept aligns with policy direction found in the SSRP and MDP.

Recommendation

- That the Assets and Infrastructure Standing Policy Committee recommends that Council approve the University of Lethbridge South Campus Outline Plan Part A – Land Use Concept. As per page 12 of Part A of the Outline Plan, the Special Study Area is not approved and will require an amendment to the Outline Plan in the future.