



CLIMATE ADAPTATION STRATEGY



Vision

A thriving, climate resilient community.

We want to build a healthy future for our city by implementing an action-based practical plan that strengthens community resilience. The **Climate Adaptation Strategy and Action Plan** (the Plan) identifies ways we can better weatherproof our assets, services, and environment for extreme weather and climate change. The Plan outlines priority actions for the City of Lethbridge to consider implementing over the next 10 years (2024-2034).

Top Climate Risks in Lethbridge

A vulnerability and risk assessment was conducted to determine the top climate risks in Lethbridge (considering a high emission scenario for 2051-2080). Climate adaptation actions were developed for these “very high” hazards:



Extreme Heat



Drought



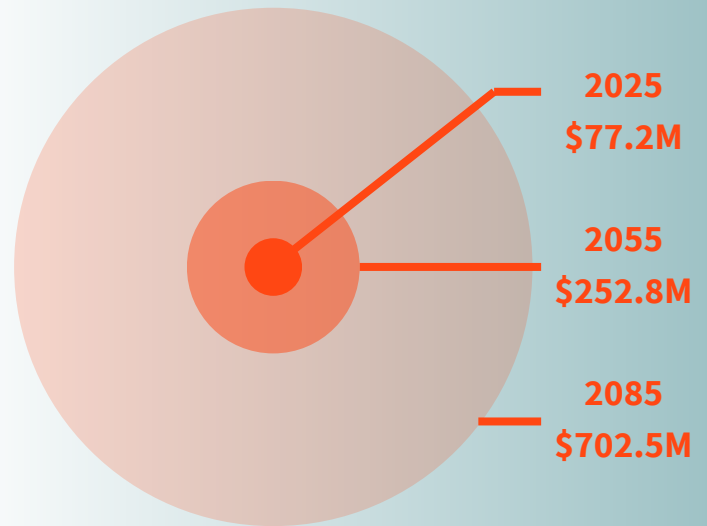
Ecoregion Shift



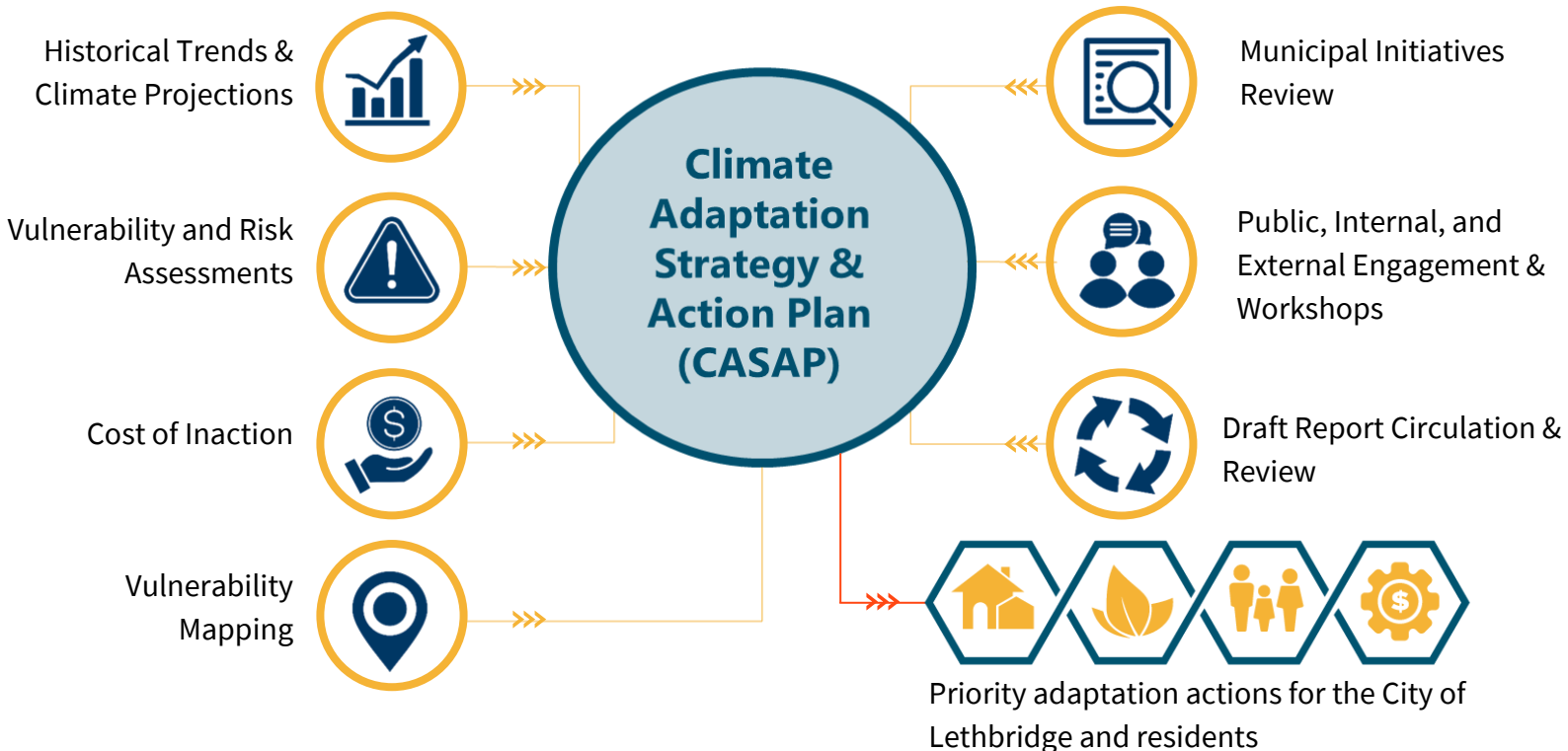
Grassfires and Grassfire/Wildfire Smoke

Costs of Inaction

Projected direct annual economic losses from impacts within Lethbridge boundaries if no adaptation or mitigation occurs.



How was the Plan developed?



CLIMATE ADAPTATION STRATEGY



What is the action plan?

The proposed actions in the Climate Adaptation Strategy and Action Plan (the Plan) are to be led by the City of Lethbridge, however partnerships with community organizations will be integral to the success of the Plan. The Plan recognizes the great work that the City is already doing in building community resilience and provides a clear framework for additional adaptation actions that will be impactful in the city. The actions were co-created through engagement with community partners, residents, and City of Lethbridge experts. The Plan aligns with other City corporate documents and existing initiatives such as the Municipal Development Plan and is an important step in ensuring Lethbridge is an Environmentally Responsible City. The action plan contains thirty-three (33) actions organized into eight (8) themes, as summarized below.



Enabling Initiatives

Climate adaptation action is coordinated both internal and external to the City.



Resilient Design

Communities and infrastructure are designed to account for future climate conditions.



City Emergency Preparedness Planning

Increase preparedness for climate-related emergencies.



Water Stewardship

Reduce community-wide water use and prepare for a future with less water in summer months.



Healthy, Safe, and Prepared Communities

Appropriate resources are readily available to support the health and safety of the community during extreme events.



Transitioning Landscapes

Increase the equity of drought and heat tolerant landscapes across the City.



Protecting Critical Infrastructure

Critical infrastructure is protected, and key services maintained, during extreme events.



Protecting and Enhancing Nature

Value, conserve, and enhance the multiple services that natural areas provide.

What can you do?

There are many things that Lethbridge residents can do to improve their personal resilience to climate impacts. A few examples are provided below.



Work with your household to set up an emergency plan so that everyone knows what to do during an emergency (e.g., evacuation plan, meet up location, etc.).



Plant drought-resistant plants and trees in your yard and consider xeriscaping to reduce water consumption.



Clear deadfall around homes and businesses and ensure firewood and propane tanks are not stored next to structures, to reduce fire risk.



Reduce outdoor and indoor water consumption by collecting and using rainwater, fixing toilet and faucet leaks, and water at the appropriate time of the day.