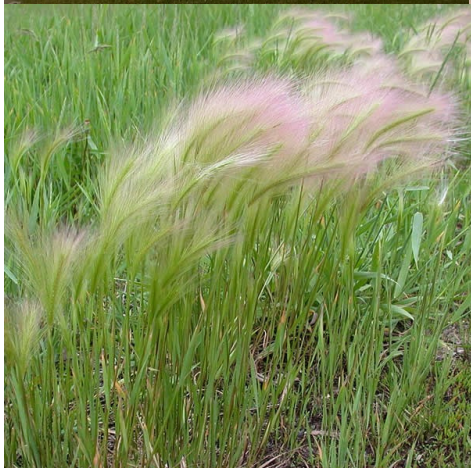
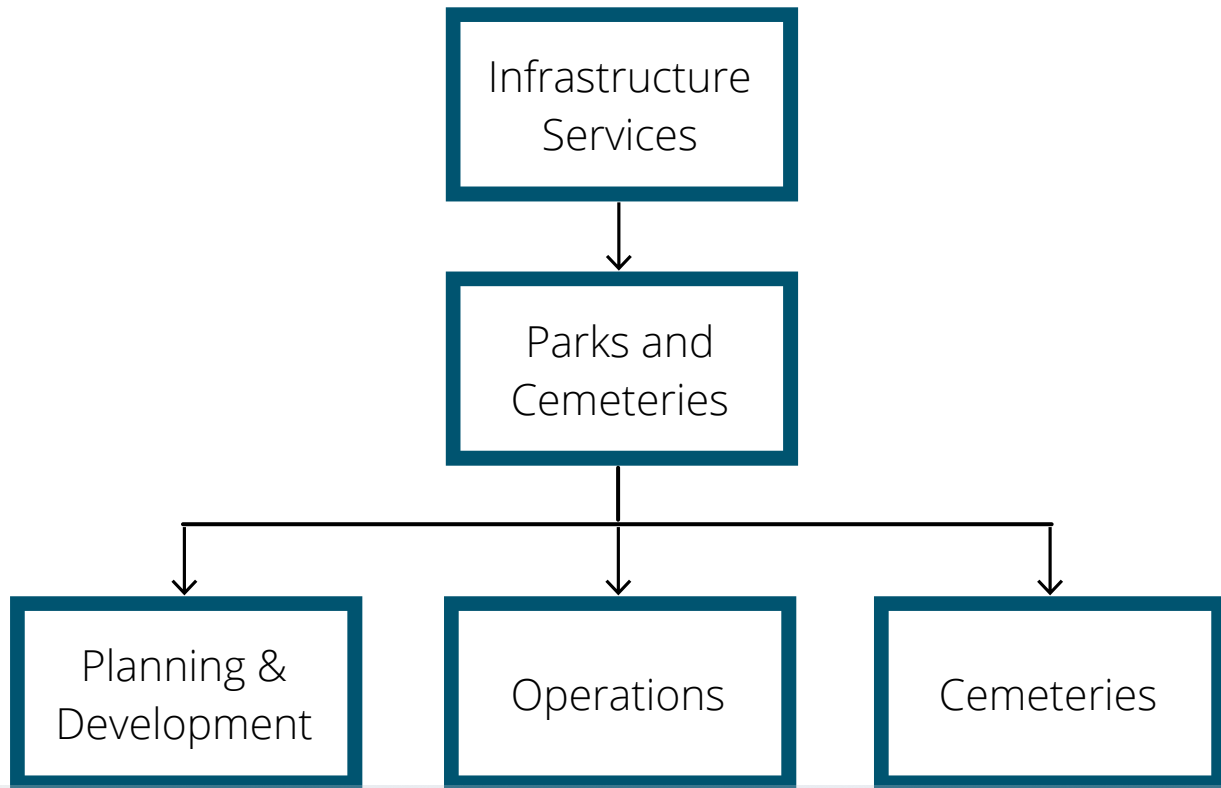


Parks & Cemeteries 2021 Annual Report



Service Areas

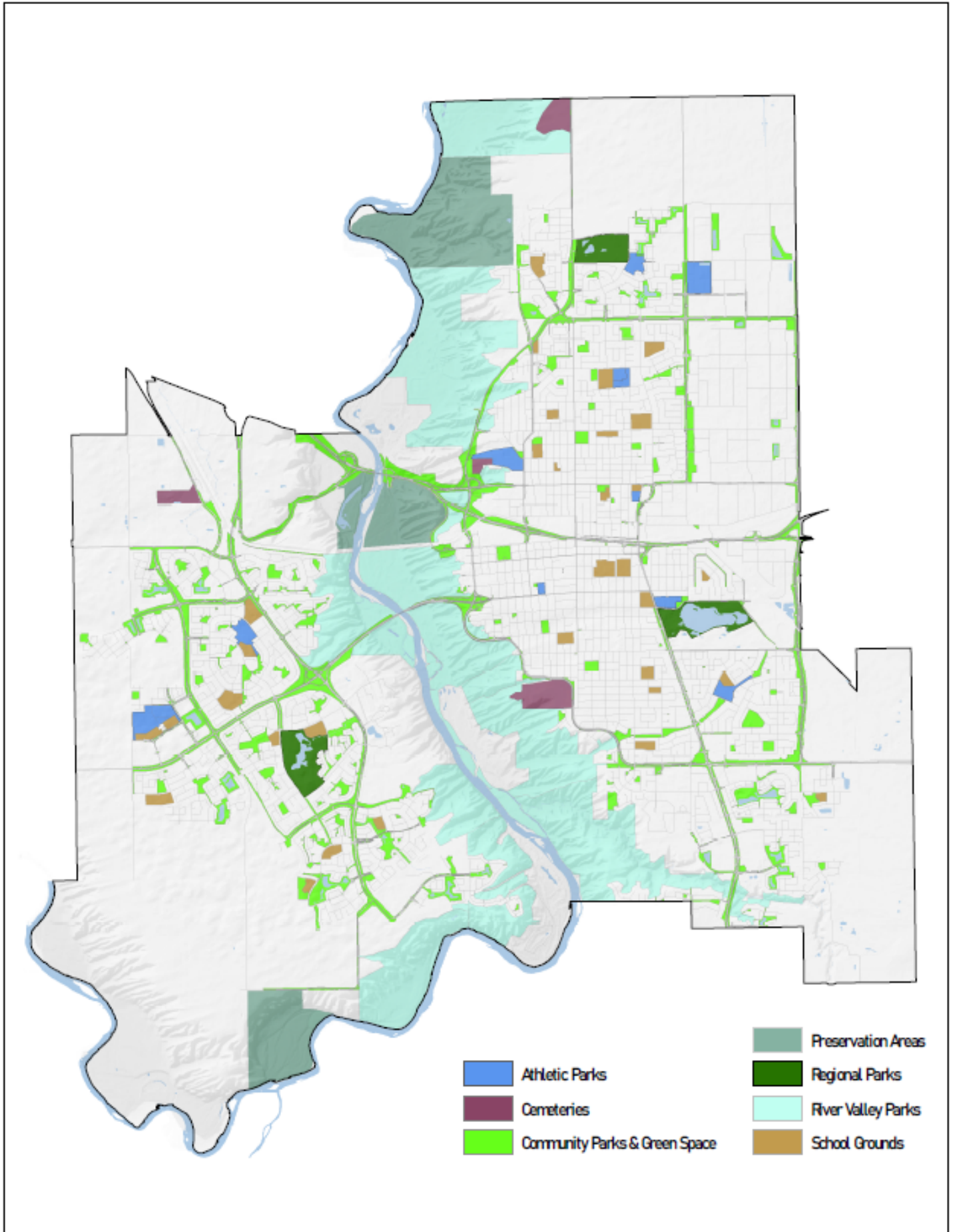


- Asset Management
- Park Planning
- Park Development
- Map Development
- Asset Data Maintenance
- Asset Reporting
- Benchmarking
- Field Audits

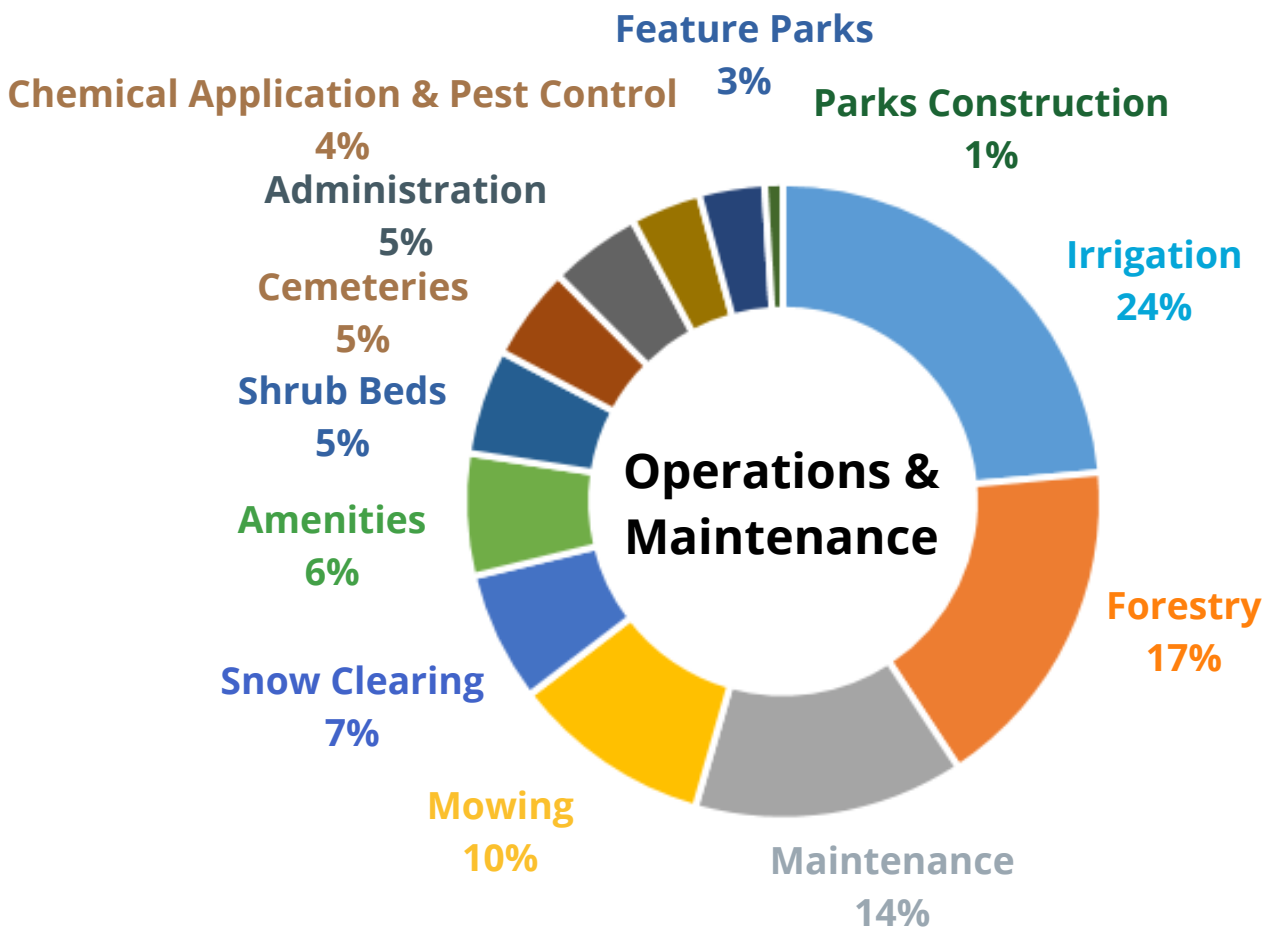
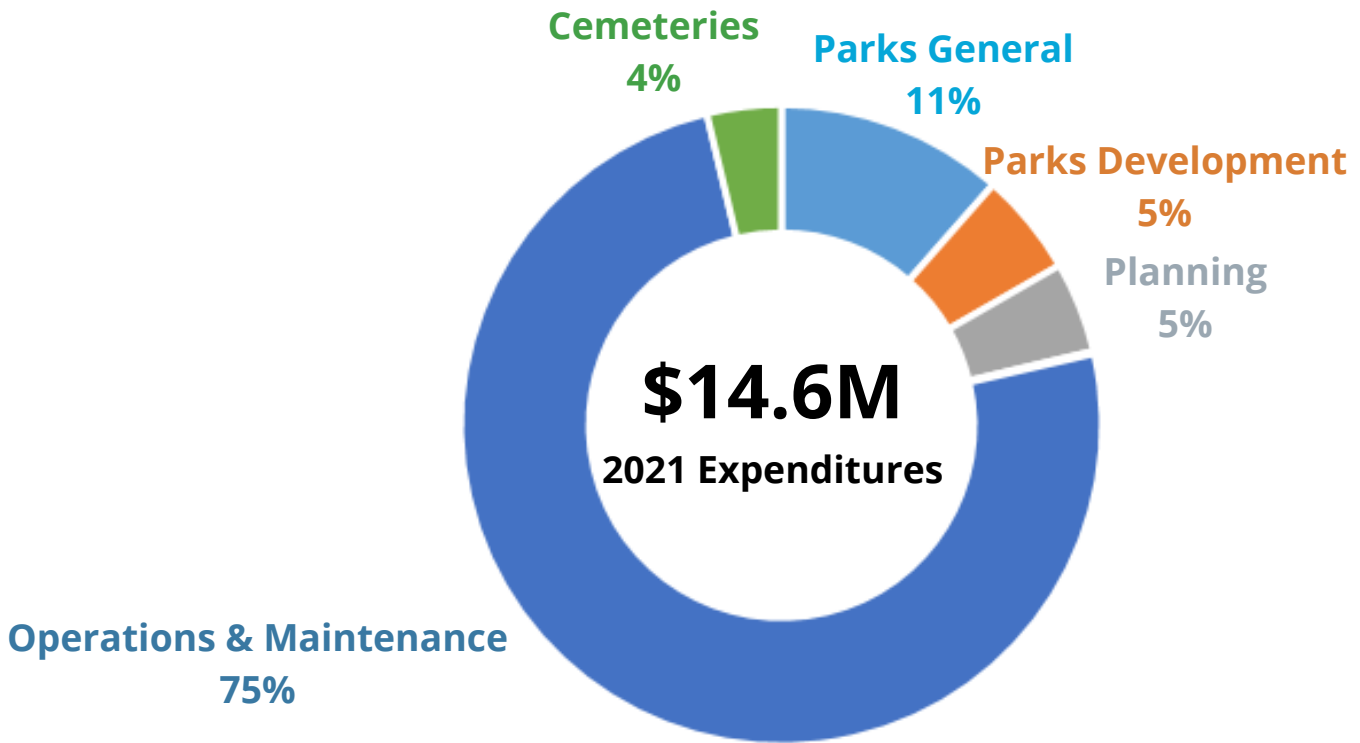
- Playground Maintenance
- Amenities and Furniture
- Turf Maintenance
- Irrigated Mowing
- Dryland Mowing
- Planting Beds
- Floral Program
- Pathway Maintenance
- Pathway Snow Clearing
- Irrigation
- Tree Planting
- Tree Pruning
- Chemical Application
- Pest Management
- Lake Ice Monitoring
- Surface Repairs
- Graffiti Abatement
- Storm Pond Monitoring
- Special Events
- Garbage Emptying

- Interment Services
- Grounds Maintenance
- Records Management

Lethbridge Parks



2021 Expenditures



Park Types

River Valley,
Environmental &
Preservation



2041

Hectares

9%

Urban Parks

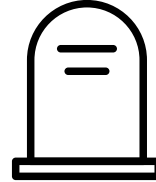


994

Hectares

87%

Cemeteries



66

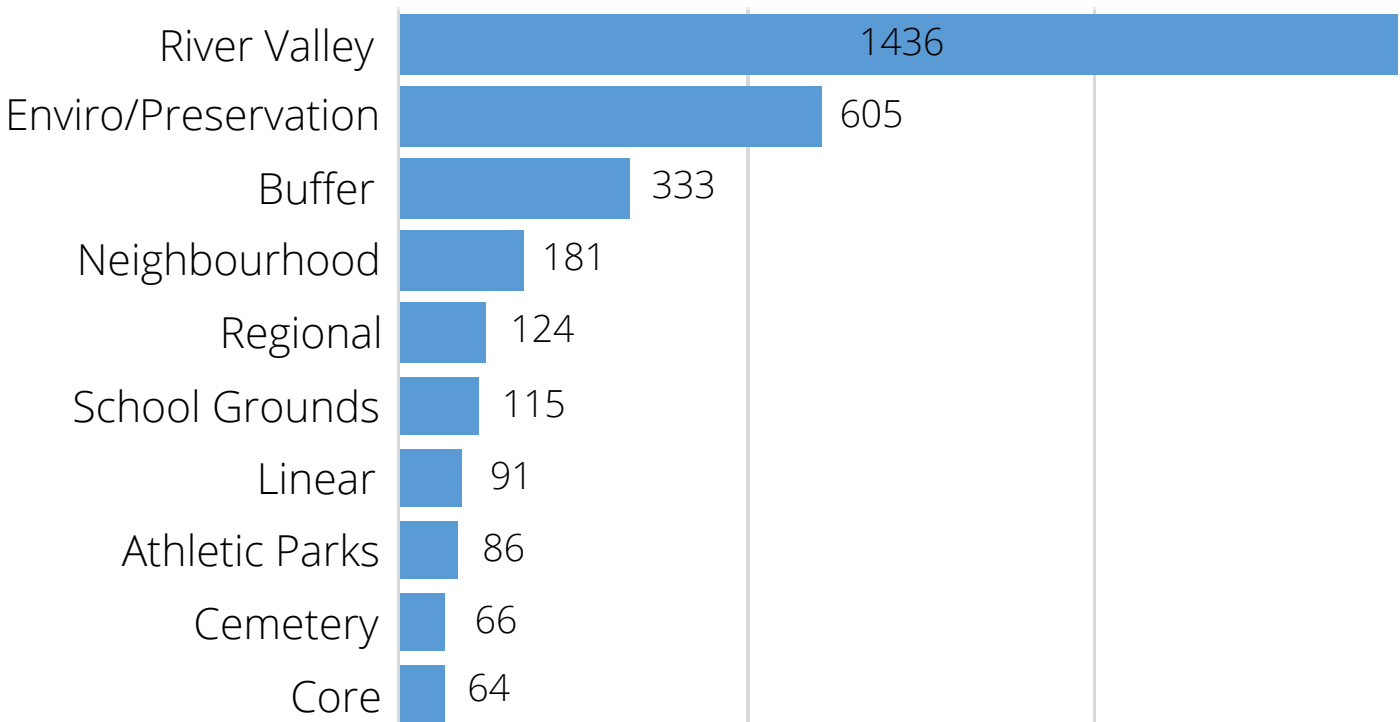
Hectares

4%

% of Operations & Maintenance Expenditures



Hectares of Greenspace



Parks & Cemeteries Stats



\$220M

Total Asset Value



3101

Hectares of Parkland



3534

311 Service Requests



125

Special Event Permits



155

Picnic Shelter Rentals



208

Hectares Grazed



23

Trail Counters



18%

Increase in Trail Usage



197

Casket Interments



190

Ashes in Ground Interments

Park and Trail Counters

Park/Trail Counters

Parks has 23 active trail counters placed around the city. Counters are left at a particular location for 2-3 years to see trends in activity. The three locations with the highest counts were:

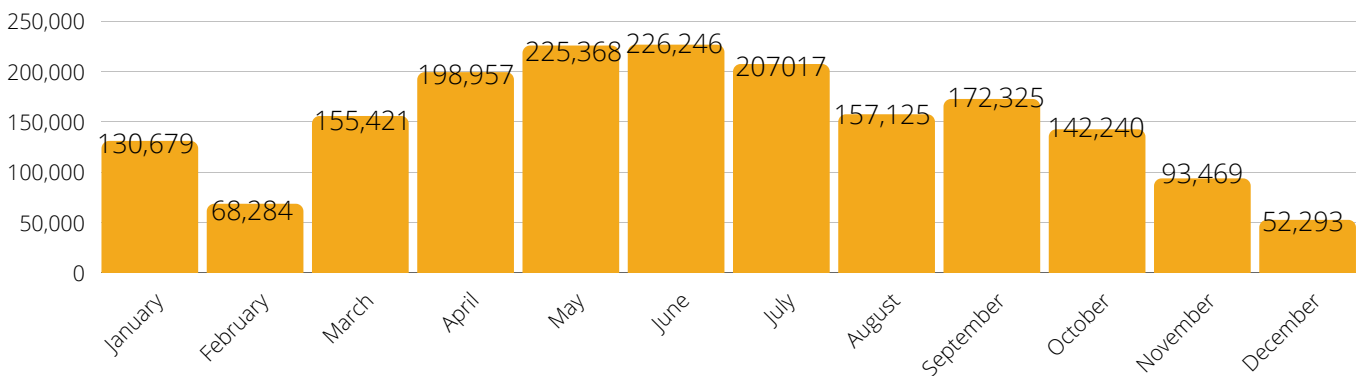
1. Henderson Park
2. Nicholas Sheran Park
3. Helen Schuler Nature Trail

Locations that experienced the highest increases in usage in 2021 compared to 2020:

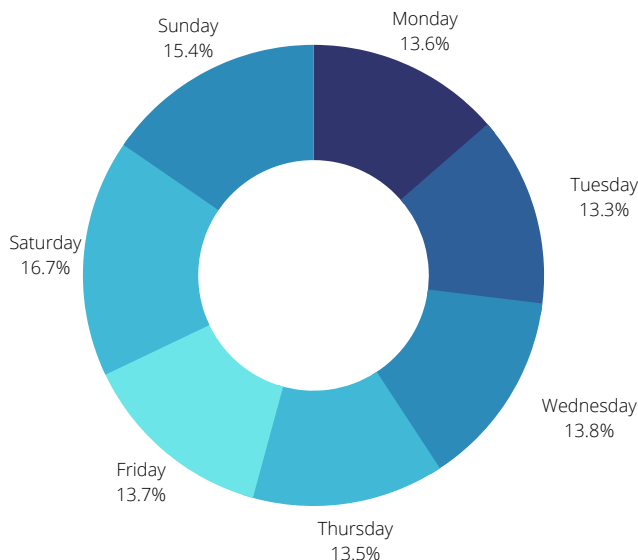
1. Whoop Up Pedestrian Bridge
2. Helen Schuler Nature Trail
3. Tudor-Chinook Heights Coulee Trail

Neighbourhood park counts spiked in the spring of 2020 and have remained fairly steady throughout 2021. Regional and river valley parks counts increased significantly in the spring of 2020 and have continued to rise in 2021. Overall, usage increased 18% from 2020 to 2021.

Counts by Month



Counts by Day of the Week



18%

Increase from
2020 - 2021

Parks & Cemeteries Cycle



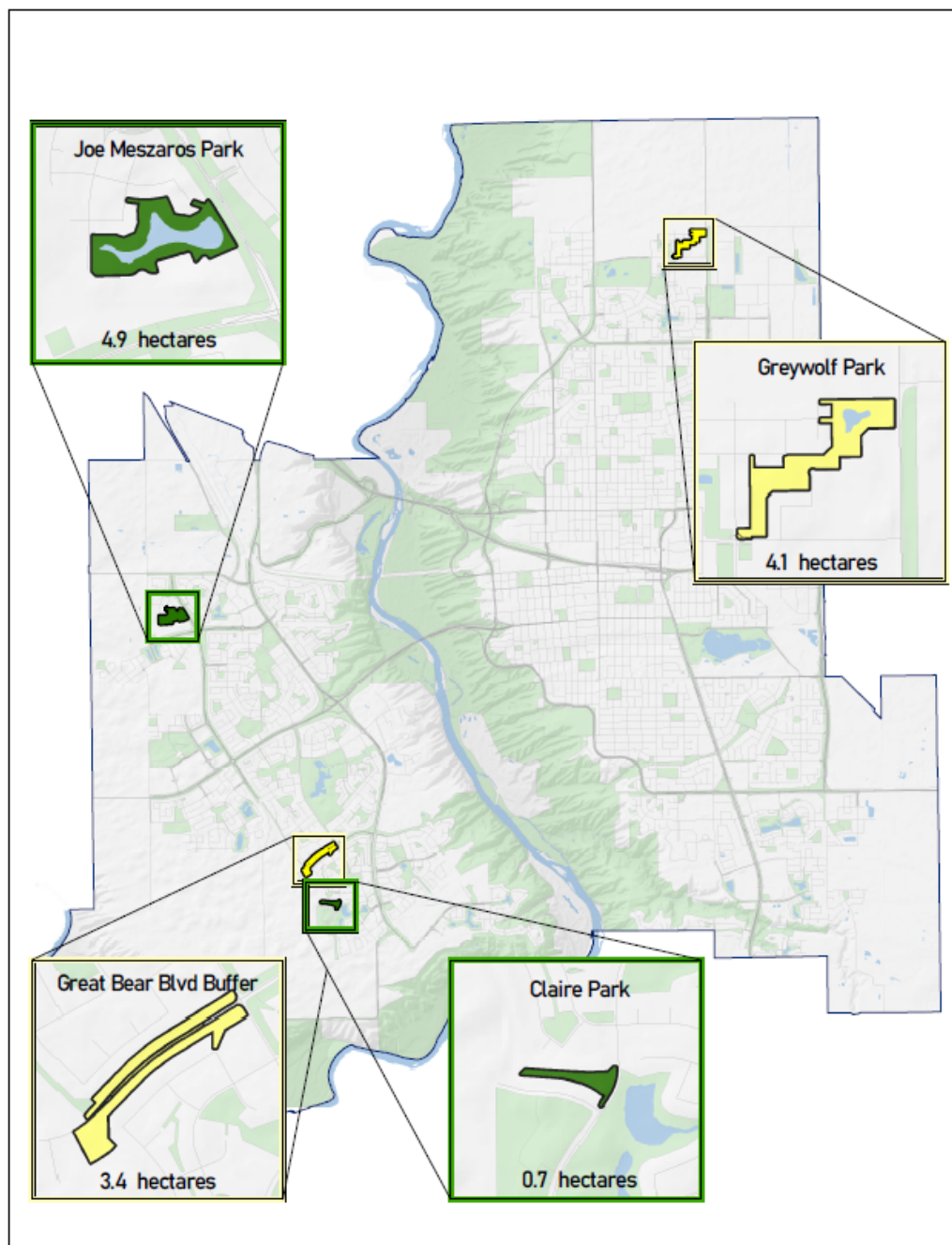
Growth in 2021

7.5 Hectares Constructed

- 4.1 ha Greywolf Park - Neighbourhood Park
- 3.4 ha Great Bear Blvd Buffer - Buffer

5.6 Hectares of Maintenance Acquired

- 0.7 ha Claire Park - Linear Park
- 4.9 ha Joe Meszaros Park - Neighbourhood Park

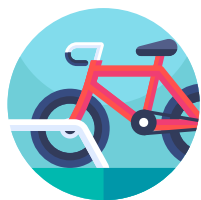


Assets Added in 2021



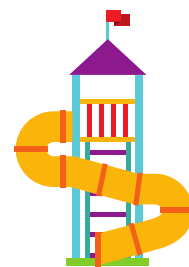
141

Benches



20

Bike Racks



2

Playgrounds



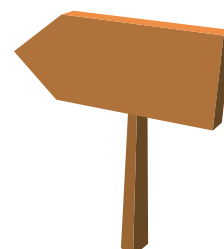
16

Doggie Bags
Dispensers



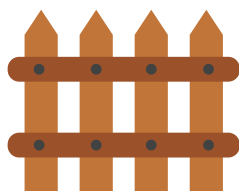
42

Garbage Cans



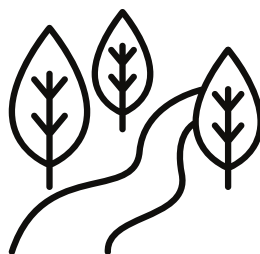
54

Signs



1.1 km

Fences



3.5 km

Pathways

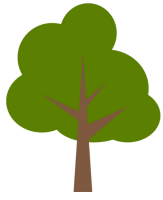


1,108 sq m

Parking Lots



Asset Information



96,400

Public & River
Valley Trees



760

Hectares of
Maintained Turf



2911

Planting Beds



278

Doggie Bag
Dispensers



250

Km of Pathways



826

Garbage Cans



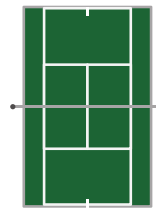
47

Parking Lots



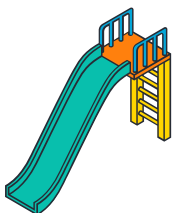
1164

Benches



49

Courts



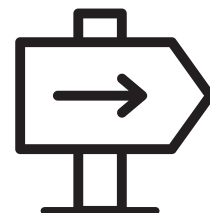
124

Playgrounds



13

Washrooms



1842

Signs

Capital Projects

Legacy Park Spray Park

The 8,500 square foot Spray Park was substantially completed in 2021. The park features over 40 spray toys, divided into three activity zones, to accommodate children and community members of all ages and abilities. The spray park is the largest in the Lethbridge region and will be open to the public in summer 2022.

Legacy Park Discovery Playground

Construction began in 2021 and is designed to be an inclusive space for all ages and abilities. The focal point of the playground will be a 30-foot tall tower.

Other amenities include a zip line, trampoline path, rubber surfacing, bridges, climbing structures, hammocks and sensory garden. Construction completion is scheduled for spring 2022.



Legacy Park Pavilion and Picnic Shelter

The Legacy Park Pavilion and Picnic Shelter opened to the public in 2021. The 4,800 square foot pavilion is a park facility with community rooms, concession area, washrooms and spray park change rooms. The 2,200 square foot picnic shelter serves as a sheltered, outdoor gathering space. Both facilities are equipped with a full kitchen and are bookable for private functions.



Bark Park

Towards the end of 2020, grading and agility mound formations, as well as drainage infrastructure installations were completed. The pathway system was constructed in 2021 along with substantial seeding to allow for dryland grass establishment. In 2022, the perimeter and internal fencing will be constructed with a target for opening the facility in August. The remaining budget will be used to add amenities to the park including agility equipment.

Irrigation Central Controller Standard Update

Went to market with the intent of establishing a long-term collaborative partnership with a trusted and experienced central irrigation control system manufacturer. A trial of three major suppliers' products took place in 2021, and a new supplier was chosen based on a number of rated criteria. Approximately 90 sites will be converted from standard controllers to the new standard central controller in 2022 as part of a new CIP initiative. This will result in reduced maintenance costs, increased efficiency in water usage, and will provide reporting to be used to develop water management objectives.

Projects

WELCOME TO THE NATURALIZED AREA

You have discovered part of a pilot project to increase populations of native grasses within the City of Lethbridge

Why Naturalize Park Spaces?

Native grasses provide many benefits to the environment and the city as a whole including:

- Attract beneficial insects such as butterflies and bees
- Attract birds and other wildlife to the area.
- Reduced maintenance costs once established means:
 - Less mowing
 - Less pest control
 - Less irrigation
 - Less fertilizing

Prairie grass species have deep roots, which work to:

- Anchor topsoil and nutrients from high winds
- Absorb excess precipitation in heavy storms to prevent flooding.
- Filter sediments and impurities from storm water, keeping rivers and streams clean and clear.
- Sequester and store carbon from the atmosphere



What's Happening Here?

This area has been stripped of existing turf and vegetation and planted with 2 different native grass blends.

Each site will be monitored to determine which seed mix and conditions help improve the establishment of these grasses within our parks.

Thank you for your patience, these plants take a bit longer to get growing and weeds may be observed before target species. Weeds will be controlled at appropriate times to ensure healthy grass growth

Tall Grass Mix

30% Slender Wheatgrass
20% Western Wheatgrass
15% Green Needlegrass
10% Streambank Wheat
10% Junegrass
10% Blue Grama

Short Grass Mix

30% Junegrass
25% Blue Grama
25% Green Needle
20% Sheep Fescue

Park Naturalization Test Plots

In response to the Naturalized Parkland recommendation in the 2020 Fiscal and Operational Review, Parks incorporated test plots of naturalized turf in three locations throughout the city. The plots consist of two different blends of native grasses and will be monitored for growth, weed control, and sustainability through the 2023 summer season. The implementation and monitoring are in partnership with the University of Lethbridge Applied Studies Program.

Southbrook Naturalized Development

Partnered with the developer of the Southbrook subdivision on a design for a naturalized pond/park development. Plans include native plant material, aquatic plantings, boardwalks, and pathways. Construction is scheduled for 2022 and this design will help form a new naturalized park standard for the City.

River Valley Trail Network

Preliminary work began on the formation of a formalized river valley trail network. These natural trails will form a sanctioned network for trail users and be maintained to recognized, international standards. Establishment of the network will formalize trail activity and allow for preservation of ecologically delicate areas of the river valley. The trail network will be developed in collaboration with local user groups and go through a public engagement process before finalization.

Playground Rubber Surfacing

Replaced the existing pea gravel with pour-in-place rubber surfacing at five playgrounds in 2021, with another seven scheduled for 2022. Rubber surfacing improves accessibility to allow for people of all ages and abilities to be able to access and use the playground equipment, provides optimum fall protection, and requires minimal maintenance compared to traditional pea gravel or engineered wood fibre protective surfacing.



Projects

Mountain Bike Park Upgrades

After consultation with local bike groups, several improvements were made to the mountain bike park located in Botterill Bottom Park. Upgrades include a new staging area, reinforced bike jumps, challenging bike drops, and tot pump track. Signage with recommendations for user skill level were also included with many features.



Henderson Park Irrigation System Replacement

Complete replacement of the 30-year-old irrigation system in Henderson Park was substantially completed in 2021. The new system is more efficient, will reduce both labor costs and time spent on repairs, and increases the overall health of the park thereby creating a vibrant atmosphere for community recreation and events.



Elizabeth Hall Wetlands Pathway Renewal

Replacement of the existing shale path along the top of the berm on the east and south sides of the wetlands with crushed limestone was completed in 2021. Scope of work included the rehabilitation of two existing staircases and the removal of one unused staircase in poor condition. In addition, the asphalt pathway that leads to the dock was replaced and widened to 1.5m with the installation of a retaining wall to allow for improved, safer access to the dock.

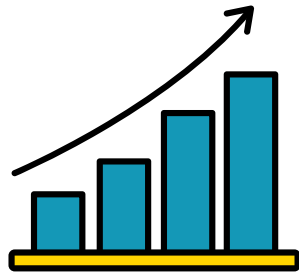
Goat Grazing

The goats were back in action again in 2021 from June until November and grazed a total of 208.4 hectares in multiple locations. The main areas for grazing were Alexander Wilderness Park and Indian Battle Park.

Using goats as a method of weed and vegetation management has many benefits including selective plant targeting (i.e.: leafy spurge) which has a significantly lower impact on native plant species compared to chemical or mechanical means. Goats are able to target vegetation in areas hard or impossible to reach with tractors, their hooves lightly aerate the soil and light grazing improves the root systems of native plants.



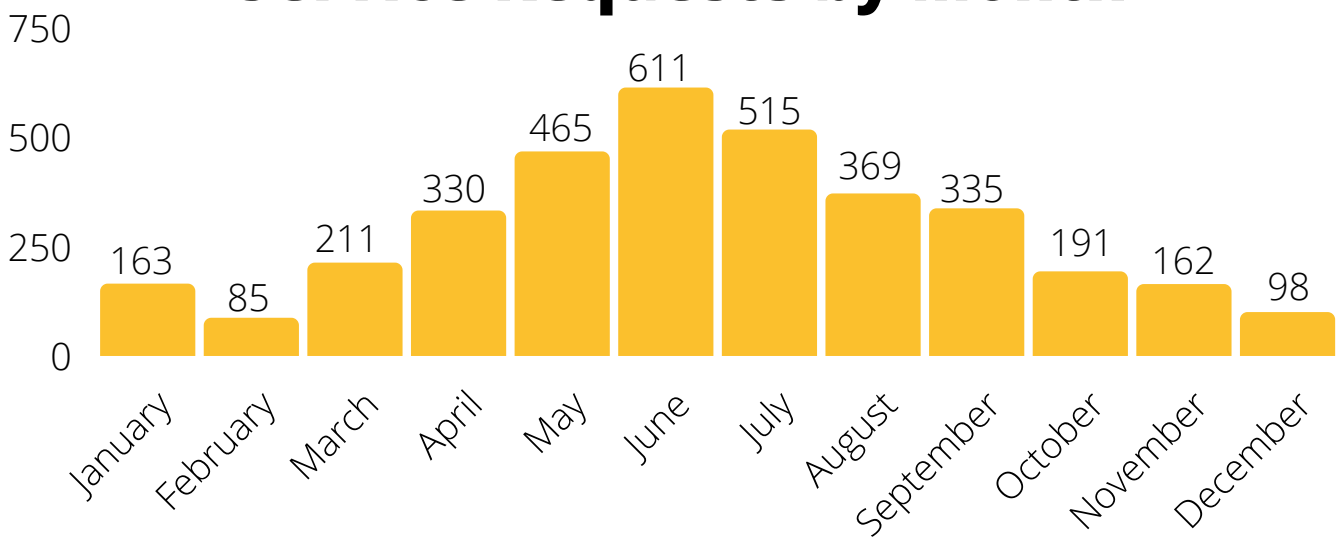
311 Service Requests



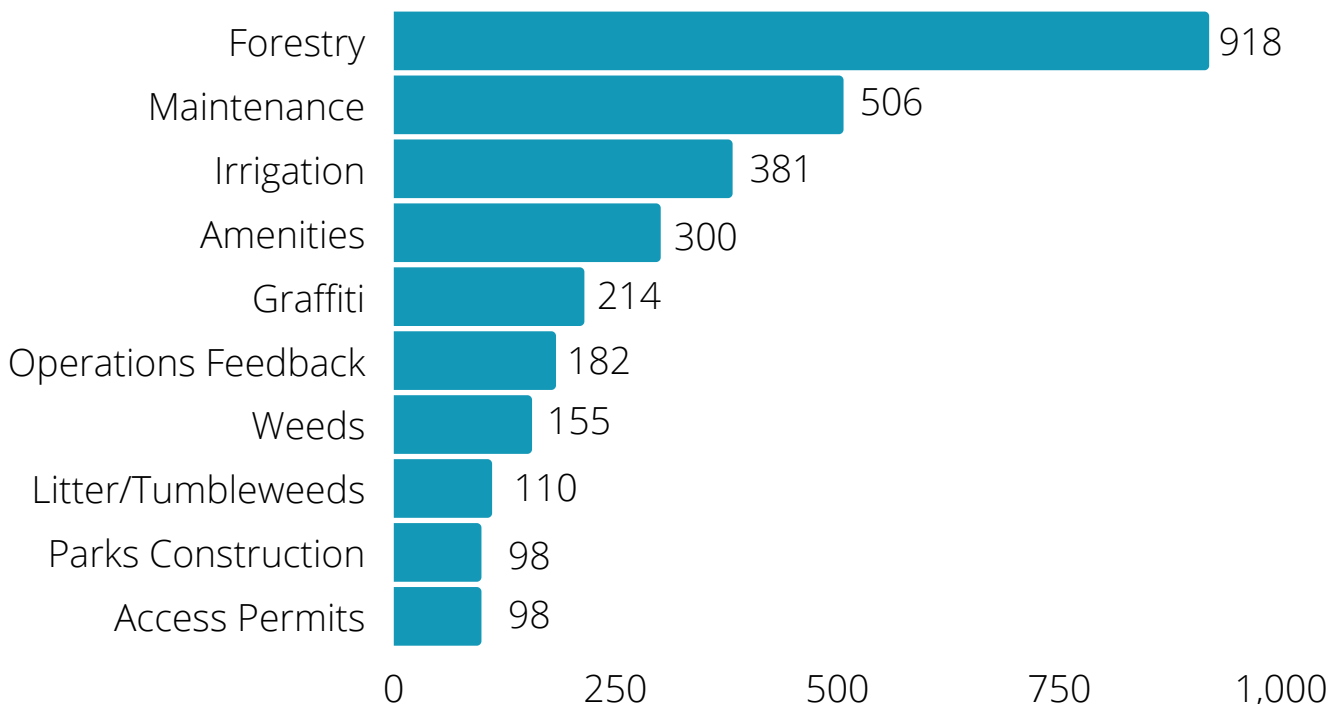
41%

Increase in 311 service requests from 2019 - 2021

Service Requests by Month



Top 10 Service Requests



Amenity Services



9

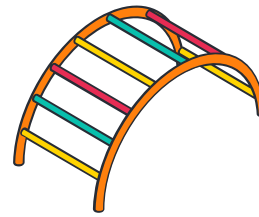
Employees

- Playgrounds
- Sports Equipment
- Signage
- Furniture
- Graffiti Abatement
- Fences



457

Service Requests



1820

Playground Inspections



89

Shopping Cart
Recoveries



425

Graffiti Removal
Service Requests



Irrigation

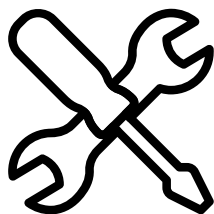
- Spring Startup
- Maintenance
- Pump Maintenance
- System Programming
- Winterizing



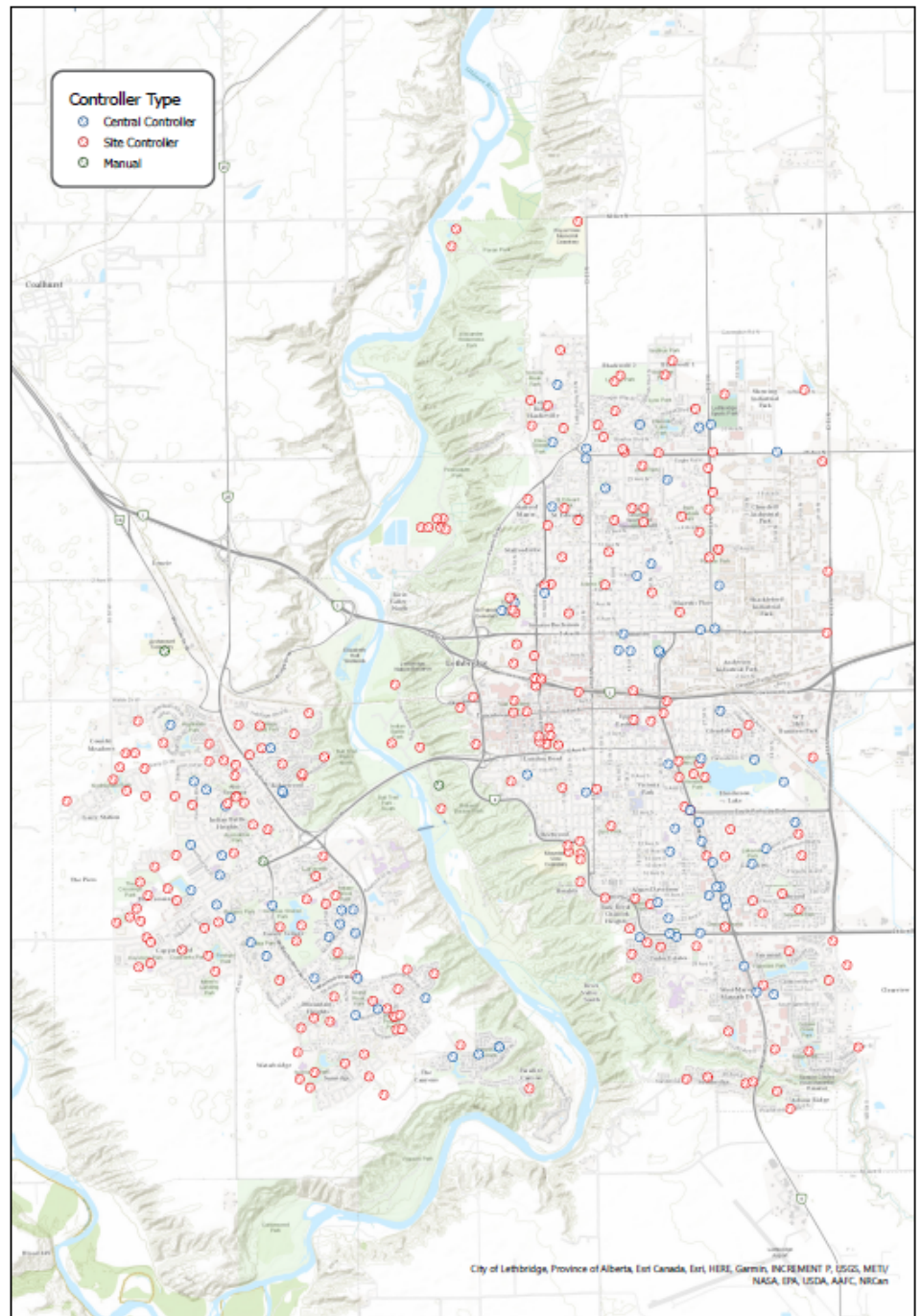
22
Employees



319
Irrigated Sites



381
Service Requests



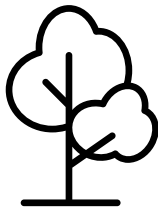
Forestry



19

Employees

- Tree Planting
- Removals
- Watering
- Pruning
- Chipping
- Pest Monitoring



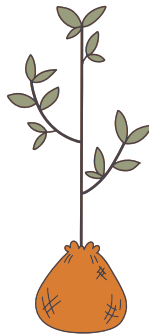
917

Service Requests



7,066

Dutch Elm Disease
Inspections



474

Trees Planted



2,036

Trees Pruned



11,130

Trees Watered

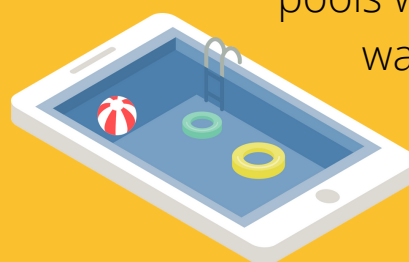
Did You Know?

Lethbridge's public trees
intercept over

58,000

cubic feet of rainfall annually.
This reduces stormwater runoff
and protects river water quality

=



14 swimming
pools worth of
water

Maintenance



106

Employees

- Mowing
- Garbage Collection
- Shrub Beds
- Sports Fields
- Parks Construction
- Chemical Application
- Feature Parks
- Snow Removal



900

Kg of Tumbleweeds Collected



13,240

Hectares of Irrigated Grass Mowed



919

Hectares of Dryland Grass Mowed



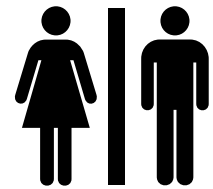
4,082

Km of Snow Clearing



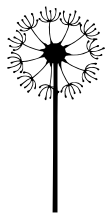
43,958

Garbage Checks / Changes



2,178

Washroom Cleanings



98

Fall Pre-Emergent Spraying Locations



30

Lake Ice Depth Checks



385

Pathway Maintenance Locations

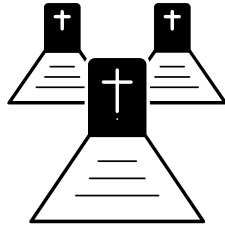
Cemeteries

- Interment Services
- Records Management
- Grounds Maintenance



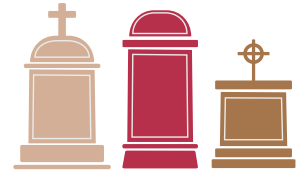
10

Employees



322

Plot Sales



478

Interments



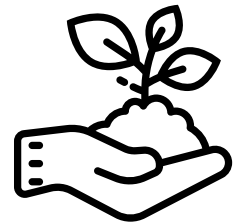
51

Trees Planted



46

Hectares
Mowed Weekly



4

Trees Donated



1224

Individuals
Visited Office



2199

Phone Calls
Answered



427

Email Inquiries

2022 Work Plan

2022 Work Plan Alignment with City Council Strategic Goals

Parks & Cemeteries Initiatives	Economically Prosperous	Healthy and Diverse	Culturally Vibrant	Well Designed	Environmentally Responsible	Supports the Region
Pathway System Connections and Extensions		✓	✓	✓	✓	
Outdoor Sports Courts		✓	✓	✓		✓
Legacy Park Construction		✓	✓	✓	✓	✓
Legacy Park Pickleball Courts		✓	✓	✓		✓
Parks Master Plan		✓	✓	✓	✓	
Bark Park Construction		✓	✓	✓	✓	
Off-Leash Areas		✓	✓	✓	✓	
Goat Grazing				✓	✓	
Mountain View Cemetery Irrigation Automation			✓	✓	✓	
Playground Replacements and Rubber Surfacing		✓	✓	✓	✓	
3 New Columbaria		✓	✓	✓	✓	✓
River Valley Trail Network		✓	✓	✓	✓	✓
Determine Service Levels	✓	✓	✓	✓	✓	

2022 Work Plan Timeline

Parks & Cemeteries Initiatives	Q1	Q2	Q3	Q4
Pathway System Connections and Extensions				
Outdoor Sports Courts				
Legacy Park Construction				
Legacy Park Pickleball Courts				
Parks Master Plan				
Bark Park Construction				
Off-Leash Areas				
Goat Grazing				
Mountain View Cemetery Irrigation Automation				
Playground Replacements and Rubber Surfacing				
3 New Columbaria				
River Valley Trail Network				
Determine Service Levels				